

# AUTO TRANSFORMER - REGUVOLT

(Torrodial Wound)

**UDEY**<sup>®</sup>

## Salient Features

- 1) **Excellent Regulation:** The drop in voltage from “no load to full load” is minimal in Reguvolt Auto-transformers.
- 2) **High Efficiency:** Careful design and proper selection of copper and core assures the user of low watt loss, as compared to other type of controllers.
- 3) **No Wave Form Distortion:** Reguvolt provides an output voltage wave-form, which is a faithful and distortion less replica of the input voltage wave form.
- 4) **Silver Plated Commutator:** A special silver plating technique is used on the commutator, enabling it to with stand high overloads & maintain constant contact drop. It is also ensures smooth operation, long life & increased resistance to corrosion.
- 5) **Smooth & Linear Output:** As voltage between turns is small and as the brush-arm is in constant contact with more then one turn, harmful sparking is avoided and output voltage can be set very easily to fraction of a volt from zero onwards by rotation of the knob.
- 6) **Low Magnetizing Current:** By using an adequate section of high quality grain oriented silicon steel, the iron losses in Reguvolt, are controlled to the minimum. The no-load current in all Reguvolt transformers, is invariably less than 3% of the rated current.



### TECHNICAL SPECIFICATIONS

Single phase:

Input: 240V, 50/60Hz AC 1 ph.

Output: 0-270V, 50/60Hz AC 1 ph.

Three phase:

Input: 415V, 50/60Hz AC 3 ph.

Output: 0-470V, 50/60Hz AC 3 ph.



**Udeyraj Electricals Private Limited - Mumbai**



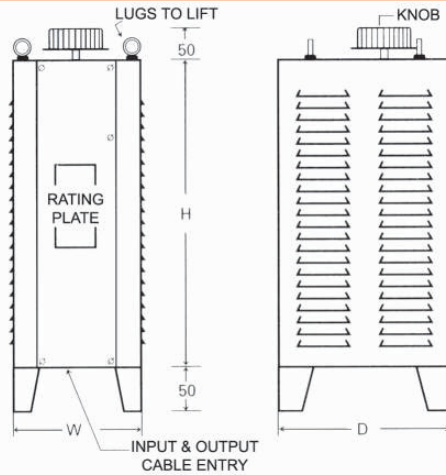
Three Phase Oil Cool Model

Three Phase Oil Cooled Models

AMPS	Floor Space (mm)	Height (mm)	Weight (Kg) Without oil
4/8/10/15 Amps	250 x 330	610	50/56/62/75
20 Amps	280 x 355	610	95
28 Amps	330 x 410	810	125
40 Amps	695 x 560	1065	140
50 Amps	650 x 560	1065	170
60 Amps	750 x 590	1065	195
75 Amps	760 x 700	1380	305
100 Amps	845 x 700	1380	350
150 Amps	970 x 730	1150	520
200 Amps	1070 x 730	1150	565
225 Amps	1070 x 730	1150	600
300 Amps	1920 x 1240	1825	895
400 Amps	1920 x 1240	2050	1045
500 Amps	1920 x 1750	1825	1325
600 Amps	1920 x 1750	2050	1495



Three Phase Portable Model

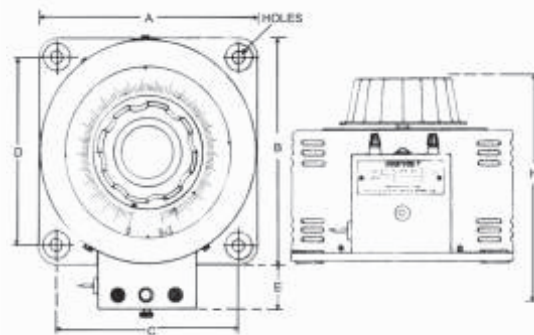


Three Phase Portable Models

TYPE	B	D	H	App. Weight
2P-3	150	200	350	15 Kg.
4P-3	200	250	425	30 Kg.
8P-3	200	250	425	36 Kg.
10P-3	210	275	425	42 Kg.
15P-3	250	300	445	55 Kg.
20P-3	275	325	450	65 Kg.
28P-3	350	400	545	85 Kg.

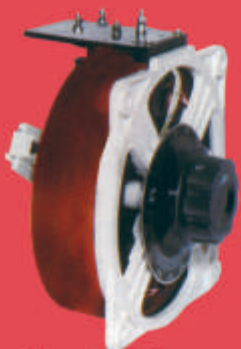


Single Phase Portable Model

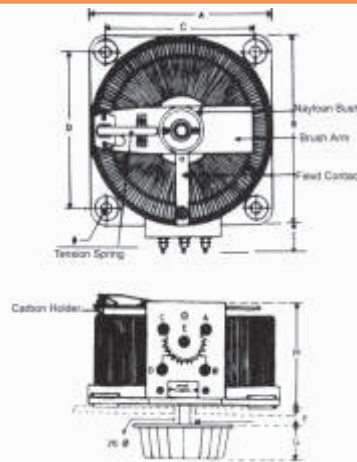


Single Phase Portable Models

TYPE	A	B	C	D	E	H	ø
4P-1	175	175	146	146	35	140	10
8P-1	175	175	146	146	35	170	10
10P-1	180	180	155	155	35	170	10
15P-1	225	225	176	176	40	190	11
20P-1	240	240	205	205	40	190	11
28P-1	300	300	238	238	70	225	13



Single Phase Flush Type Model



Single Phase Flush Type Models

TYPE	A	B	C	D	E	F	G	H	ø
2F-1	110	110	92	92	15	6	30	95	7
3F-1	110	110	92	92	15	6	30	115	7
4F-1	175	175	146	146	35	6	35	102	10
8F-1	175	175	146	146	25	6	35	130	10
10F-1	180	180	155	155	25	6	35	135	10
15F-1	225	225	176	176	25	10	40	135	11
20F-1	240	240	205	205	25	10	40	135	11
28F-1	300	300	238	238	60	10	40	145	13

Due to the company's continuous research program, the information herein may change at anytime without previous notification.

**UDEY**

UDEYRAJ ELECTRICALS P.Ltd.

212-A, Hind Saurashtra Indl. Est.,  
Marol Naka, Mumbai-400 059. INDIA  
Tel: + 91 22 6691 6181  
Fax: + 91 22 6694 2787  
E-mail: udeyraj@vsnl.com  
Website: www.udeyraj.com

**HIGH CURRENT REGUVOLT AUTO TRANSFORMERS IS OUR SPECIALITY**

Reguvolt is now available in high current ranges from 255 Amps. up to 1000 Amps, in both single phase & three phase model. Special paralleling techniques designed by us, have made it possible to surpass pervious current limit of 200 Amps. in torrodial auto transformers.

**The following are the salient features of high current Reguvolt Transformers:**

- 1 Special forced current paralleling techniques result in current sharing of each coil +2%.
- 2 Flanged type pressed steel radiators, are supplied or separately packed, making the units easy for transportation.
- 3 Welded or High Torque A.C. Synchronous Drive.
- 4 Terminals in the form of bus-bars.
- 5 All other feature of oil-cooled auto transformers.